

user manual

 This manual contains
important safety information

imagination
playground ™

A photograph of children playing with large, blue, block-based playground equipment inside a wooden building. The equipment consists of various shapes like beams, blocks, and towers. A large blue circle is overlaid on the center of the image, containing white text. The background shows a window with greenery outside and a stone wall on the right.

Imagination Playground™
is an innovative block-based
system that transforms any
space into a play space that
encourages learning, social
development, movement,
and above all fun.

table of contents

04	Letter from the Inventor
06	What is Imagination Playground?
08	Benefits and Usability
10	Learning through Block Play
12	Safety
13	Maintenance and Cleaning
14	Products
16	Big Blue Blocks
18	Medium Blue Blocks
20	Small Blue Blocks

22	Containers
24	Box
29	Cart
32	Bag
34	Limited Warranty
38	Contact Us

As you and your children play, we'd love to hear your comments and learn about your experiences.

If you have any questions, call us at 1.678.604.7466 or email us at contactus@imaginationplayground.org.

letter from the inventor

Welcome to Imagination Playground!

I was inspired to create Imagination Playground by watching my own children play.

I had ordered an art table for them, and the day it arrived I was excited to see how they were going to use it. When I came home, they were playing with the cardboard box and foam pellets inside.

That was the beginning of the journey of making play spaces where kids can do what they do best, which is use their imaginations to make up their own stories, create their own environments, take them apart, and start all over again.

Every parent, educator, and caregiver has an opinion about how kids should play. It's something that we naturally want to try to control. But the more I observe kids playing, I believe that they do it best themselves.

As you watch the faces of the children you care about as they play, I hope you feel what I do: joy.

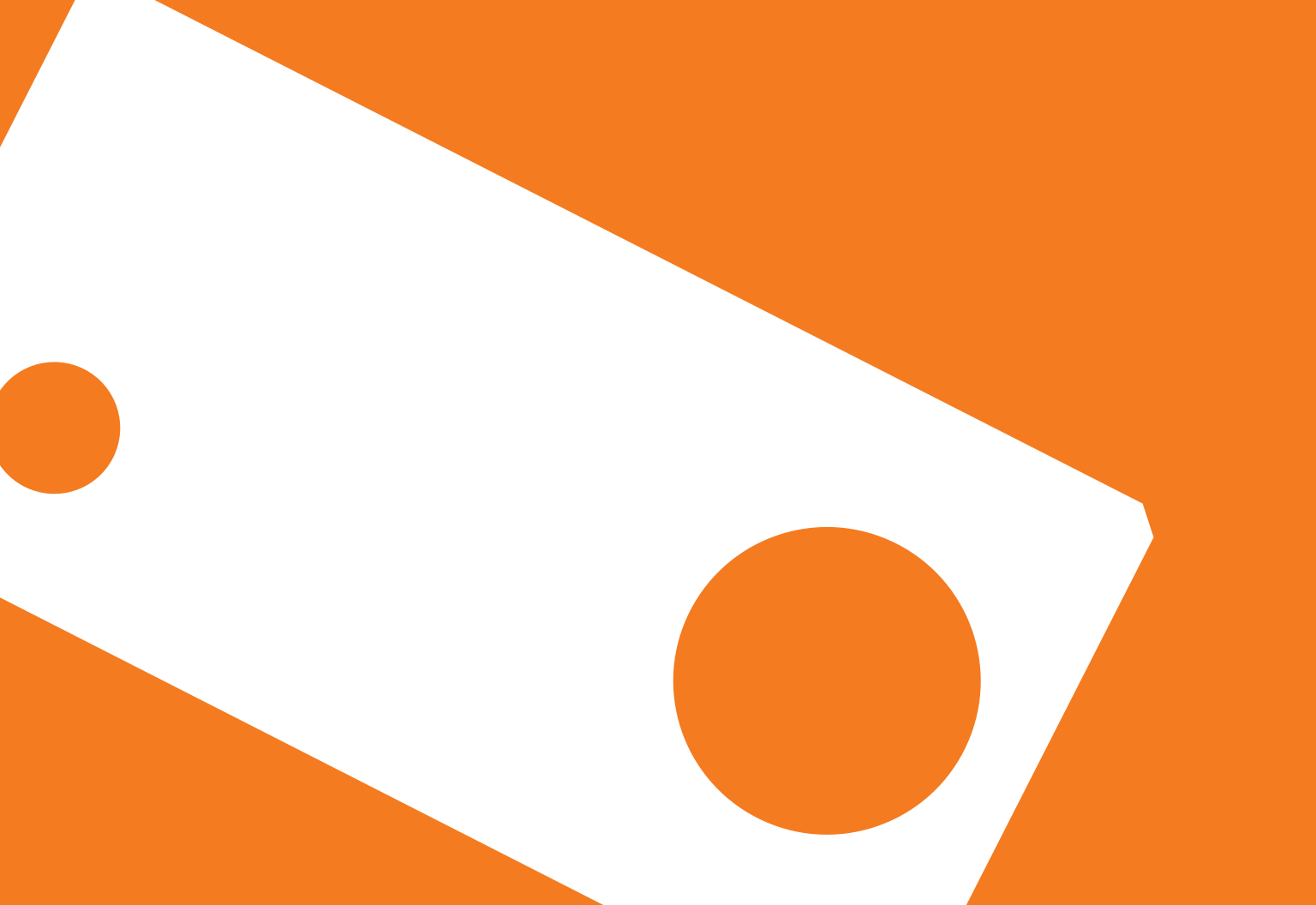
David Rockwell

David Rockwell

Inventor, Imagination Playground™







what is imagination playground?

Imagination Playground includes bricks and cylinders, accented with chutes, channels and parts that suggest motion or connectivity. They inspire children to design their own inventions, environments and activities. Unlike toys, which often are limited in the number of ways you can play with them, blocks are open-ended.

Blocks are incredibly valuable learning tools. For more than a hundred years, educators have used block play to help accelerate students' cognitive and social development. They empower children to use their imagination to build their own world, rather than inhabit one we create for them. Kids try new things and stretch their abilities.

Child development experts have long known that unstructured free play and block play help children in all areas of development: intellectual, social, physical, and emotional.

Imagination Playground combines the benefits of many different play activities, including dramatic, constructive, and gross motor play. They are an easy and safe way to help kids learn lessons that are fundamental to growing up happy and healthy.

benefits and usability

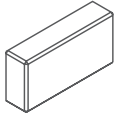
Imagination Playground is made up of what experts call “loose parts” that prompt children to transform their environment and create a play space of their own.

Each set contains a wide variety of modular parts that are easy to stack, line up and move around. Bricks and cylinders—accented with chutes, channels, and parts that suggest motion or connectivity—inspire children to design their own inventions, environments and activities.

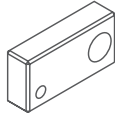
Children enjoy an endless variety of play patterns including construction, pretend play, role-playing and inventing their own games. Most important, they are deeply engaged, active, and have hours of fun.

features of play	benefits	
Building	Joy and Fun	Release and Relaxation
Stacking	Creativity and Imagination	Fine and Gross Motor Skills Development
Connecting	Communication and Collaboration	Focus and Determination
Channeling	Self-Expression and Social Skills	Movement and Exercise
	Problem Solving and Accomplishment	

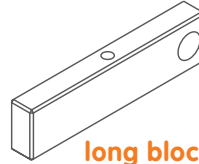
imagination playground's loose parts include



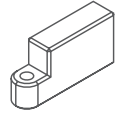
primary blocks



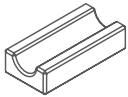
blocks with holes



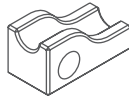
long blocks



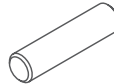
squeaky hinges



channel straights



chutes



plugs



nickels



play balls



channel bends



arch chutes



long noodles



square blocks



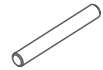
clover gears



lil' cheeses



plus gears



small plugs

learning through block play

Imagination Playground Blocks are a wonderful way to encourage children's development. Through block play children practice skills for reading, writing, speaking, and listening. Block play can also support children's learning in math, science and social studies.

Block play involves cooperative and collaborative learning which helps children grow emotionally and socially. Block play also enhances children physical growth and development.

The blocks encourage children to build constructions that are both imaginative and realistic. Working cooperatively while building with the blocks is one of the most sophisticated forms of play. Through these social norms and behaviors, children are learning important social norms and behaviors. They practice the rules that underlie all social interactions.

In constructing with the Big Blue Blocks, children's creativity is enriched by exploring problems and generating solutions.

They can change the environment in ways that are meaningful to them. They remember and make connections between previous experiences and can test and evaluate their skills. Most importantly they develop curiosity and the desire to want to know and understand.¹

1. Cassie Landers, Ed. D, MPH "Building with Blocks" 2014.



safety

Adult supervision is required at all times.

Imagination Playground Big and Medium Blocks are appropriate for children ages two and older. The blocks are lightweight and soft to the touch, yet dense and firm enough to build structures and shapes.

The Small Blocks, because of their size, should only be used by children ages three and up.

All Imagination Playground products can be used on nearly any flat surface, indoors or outdoors. This includes outdoor surfaces such as grass, artificial turf, mulch, sand, concrete, or rubber mats; and all interior surfaces such as concrete, carpet, linoleum, tile, or wood.

Imagination Playground Blocks meet American Society for Testing Materials (ASTM) and U.S. Consumer Products Safety Commission (CPSC) standards.

maintenance and cleaning

Imagination Playground Blocks are made out of a non-toxic, waterproof foam, the blocks are resistant to mold, mildew, corrosion, and microorganisms. Each piece is made individually, so small discrepancies or irregularities are not defects.

For cleaning, use a non-toxic detergent and water with a sponge or a soft-bristle scrub brush. Do not use strong cleaners (such as caustic soda), which can potentially harm the surface of the blocks. The inside of each storage unit should be dry before the blocks are stored inside. Storage in extreme outdoor weather conditions such as heavy rain, snow, and freezing temperatures is not recommended.

Imagination Playground Blocks are recyclable and can be disposed of through your local sanitation service. They can also be sent back to the manufacturer for recycling. Contact Customer Service (please see the Contact Us section of this guide) for assistance.



products

Imagination Playground comes in three different sizes.

1. Big Blue Blocks – the original
2. Medium Blue Blocks – half the size of the original blocks for smaller spaces
3. Small Blue Blocks – ultra-portable blocks for tabletop play

These three sizes are available in a variety of quantities and configurations.
Visit [imaginationplayground.com](https://www.imaginationplayground.com) or contact us to learn more.

big blue blocks

The Big Blue Blocks are designed for large indoor or outdoor spaces such as playgrounds, schools, gyms, parks, museums, or child care facilities. They are appropriate for all children ages 2 and up.

In addition to the 17 original shapes, Imagination Playground also offers two add-on sets of Big Blue Blocks with new shapes.

The Angles Add-On Set introduces more advanced geometric concepts like polygons and concave shapes to prompt more nuanced play.

The Curves Add-On Set offers curvilinear shapes that add an element of whimsy and allow children more opportunities for self-expression.

To get the most out of your Big Blue Blocks, consider designating an adult Play Associate for each play session. Play Associates are trained adults who oversee an open setting where children can direct their own play. They maintain a safe, welcoming environment, and manage the collection of Big Blue Blocks. To learn more about the role of Play Associates, and access a free online training course, visit: www.imaginationplayground.com/playassociate



big blocks



ages



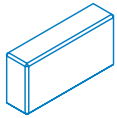
number of parts
(17 different shapes)*



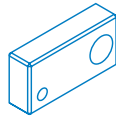
recommended
minimum play area



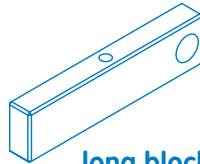
recommended
headcount per set



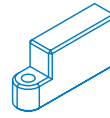
**primary
block**



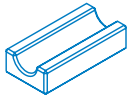
**block with
holes**



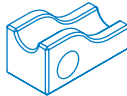
long block



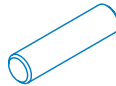
**squeaky
hinge**



**channel
straight**



chute



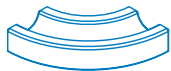
plug



nickel



play ball



**channel
bend**



arch chute



**long
noodle**



**square
block**



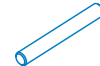
clover gear



lil' cheese



plus gear



small plug

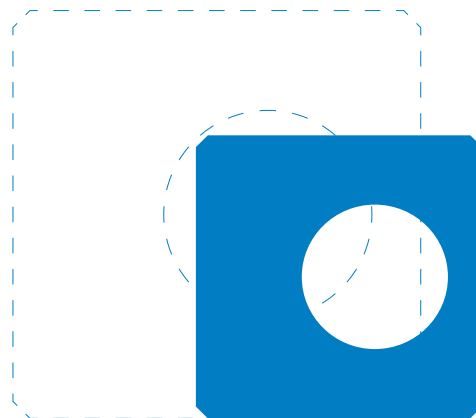


* International and U.S. Imagination Playground Block configurations may differ.

medium blue blocks

The Medium Blue Blocks are perfectly sized for smaller indoor or outdoor spaces such as classrooms, private homes, or day care centers. Their architectural scale lets kids play and dream bigger—even in smaller spaces.

Our Medium Blue Blocks sets have been carefully assembled to provide 100% of the child developmental benefits and play value of original Imagination Playground Big Blue Blocks. They are appropriate for all children ages 2 and up.



medium blue blocks are about half the size of big blue blocks



medium blocks

2+

ages

300
pieces

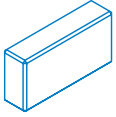
number of parts
(17 different shapes)

225
sq ft

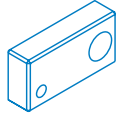
recommended
minimum play area

15-20

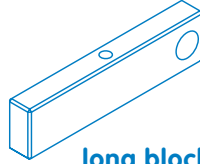
recommended
headcount per set



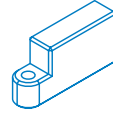
**primary
block**



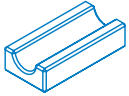
**block with
holes**



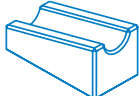
long block



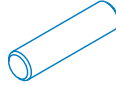
**squeaky
hinge**



**channel
straight**



chute



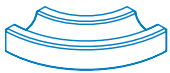
plug



nickel



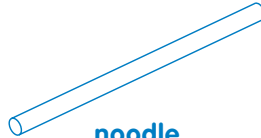
play ball



**channel
bend**



arch chute



noodle



**square
block**



clover gear



lil' cheese



plus gear

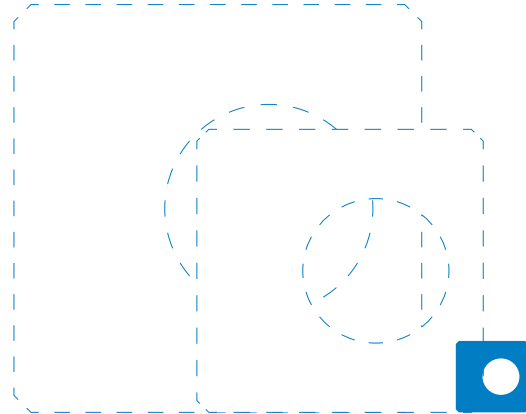


small plug

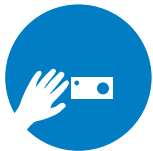


small blue blocks

Small Blue Blocks are designed for instant tabletop creative play anywhere kids go. These ultra-portable blocks transform any surface into a play area that feels so much bigger than it really is. They are appropriate for all children ages 3 and up.



small blue blocks fit in the palm of a child's hand



small blocks



ages



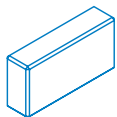
number of parts
(15 different shapes)



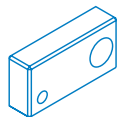
recommended
minimum play area



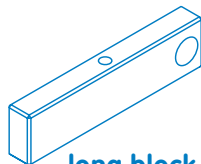
recommended
headcount per set



**primary
block**



**block with
holes**



long block



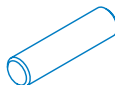
parallelogram



trapezoid



peak



plug



lil' hex



rhombus



arch chute



connector



**square
block**



clover gear



lil' cheese



plus gear



small plug





containers

We've designed three different storage containers specifically for use with the Imagination Playground Big and Medium Blue Blocks: the Box, the Cart, and the Bag.

Although the Imagination Playground Blocks can be used nearly anywhere, their storage containers should be placed on solid, level surfaces. Soft surfaces such as gravel, sand, or mulch are not suitable. Grass and turf are also not recommended surfaces for Imagination Playground storage units.

box

The Box storage unit is made up of two weather-resistant metal components that fit together for storage. The Box and compartments are for storage only. Children must not handle or play in or on the storage unit or its components.

assembly

Assembly is required for the Box storage unit. Please refer to the Assembly Instructions included with your Box storage unit for full details.

dimensions

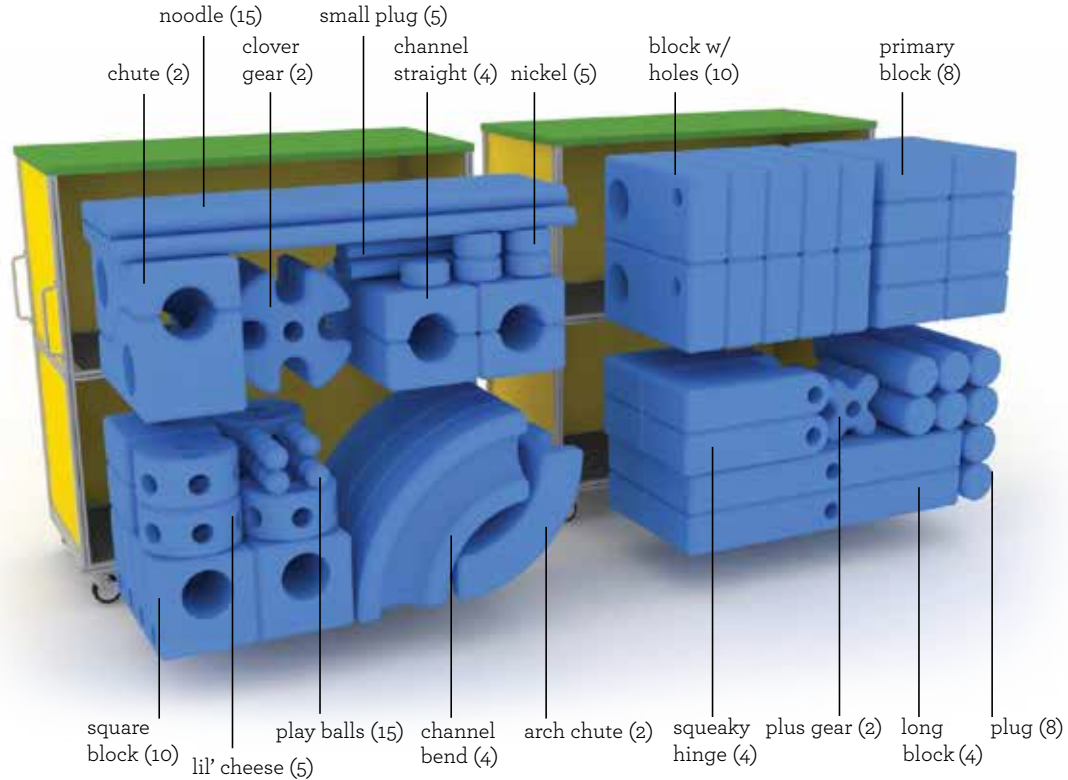
Approx.
4'4" L x
5'2" D x
5'0" H

(assembled Box)

Total Weight:
625 lbs

(including contents)

Site surface
must support
1,000 lbs



One Box is designed to store a 105-piece Big Blue Block set.

using the box

Two adults are required to open, close, or move the Box. Children should never be permitted to move or handle the Box. When the Box is stationary, the wheels should be engaged in the locked position.

Please read the following descriptions and directions before opening and closing your storage unit. Damage to the Boxes may result if the procedures below are not followed.

hook/eyelet latches

The two components of the Box are fastened together by hook and eyelet latches. (Figures A & B). To open the Box, unfasten the hook (on one side) from the eyelet (on the other side). Remember that there are two hook/eyelet latches, one on each end of the Box. Unlatch them both before you separate the compartments.



wheels

Each compartment has four wheels, two of which have a locking pedal (Figure C).

To engage the locks, press down on the lever with your foot to the “on” position (Figure D). To disengage the locks, lift the lever with your foot to the “off” position. You must disengage all the locks before moving the Box, or the wheels may be damaged.

The wheel locks should be in the lock/engaged position at all times during play sessions.



wheels in unlocked "off" position



wheels in locked "on" position

handles and steering

You will find handles on one end of each compartment. Use these handles to wheel the compartments apart when opening and to steer the compartments when moving them.

The Box is made up of two halves, which can be separated to fit through a standard 32-inch doorframe. Always use caution when doing this, and ensure that no contents are sticking out or unstable. Always have one adult on each end of the compartment during movement of the compartments and Box. Hands and fingers should be clear from the gaps between the doorframe and the unit.

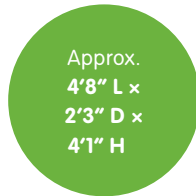
to close the box

- 1 Unlock the wheels.
- 2 Fit the compartments together using the large handles.
- 3 Line up the two compartments and latch the hooks into the eyelets.
- 4 Lock the wheels for stability.

cart

The Cart is an open-top container with wheels. It is water-resistant, with grommet holes at the base for drainage. A fitted cover can be purchased separately for outdoor storage. The Cart is for storage only. Children must not handle or play in or on the Cart.

dimensions

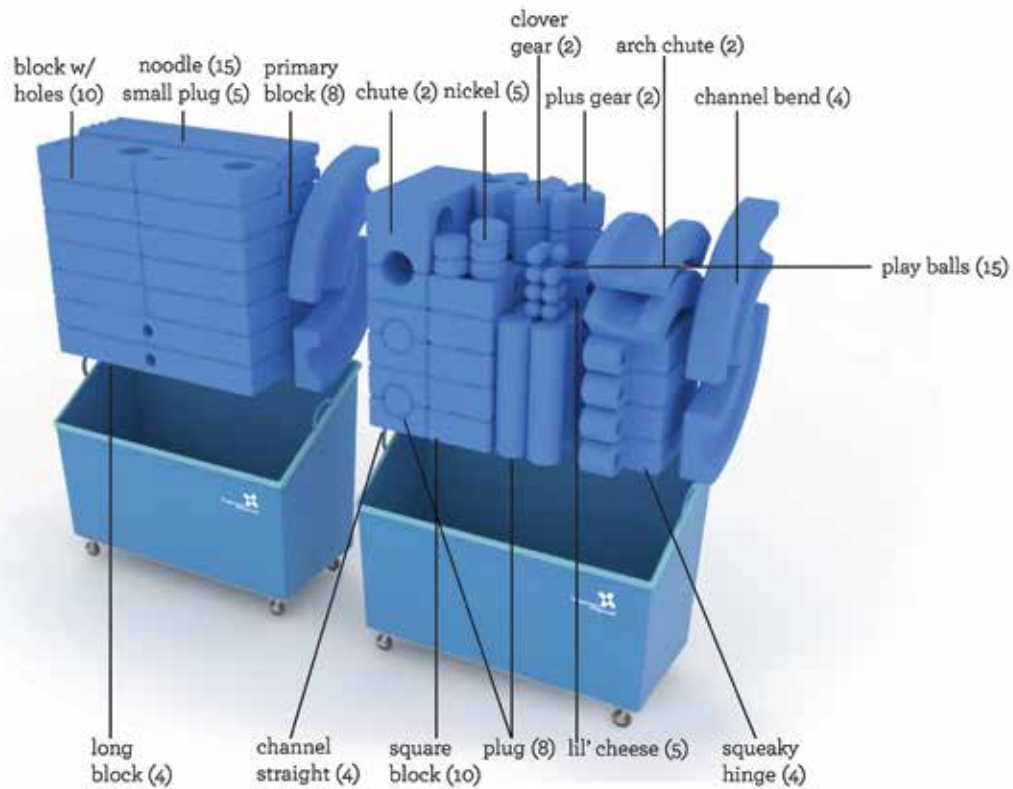


(one Cart)



(two Carts and contents)





Two Carts can store a 105-piece Big Blue Block set.

using the cart

Two adults are required to move the Cart. Children should never be permitted to move or handle the Cart. When the Cart is stationary, the wheels should be engaged in the locked position.

Please read the following descriptions and directions before using your Cart storage unit. Damage may result if the procedures below are not followed.

handles and steering

You will find handles on both ends of the Cart to help you maneuver it.

The Cart is designed to easily fit through a standard 32-inch door opening. Always use caution when doing this, and ensure that no contents are sticking out or unstable. Always have one person on each end of the Cart when moving it. Hands and fingers should be clear from the gaps between the doorframe and the unit.

wheels

Each storage unit has four wheels. Each of the two wheels on the left-hand side has a locking pedal (Figures C and D on page 27). To engage the locks, press down on the lever with your foot to the “on” position (Figure D). To disengage the locks, lift the lever with your foot to the “off” position. You must disengage all the locks before moving the units, or the wheels may be damaged.



bag

The Bag is a lightweight container made of tough, rubberized canvas with two wheels on one side. The Bag is for storage only. Children must not handle or play in or on the Bag.

using the bag

One adult is required to move the Bag. Children should never be permitted to move or handle the Bag.

The Bag is designed to easily fit through a standard 32-inch door opening.

dimensions

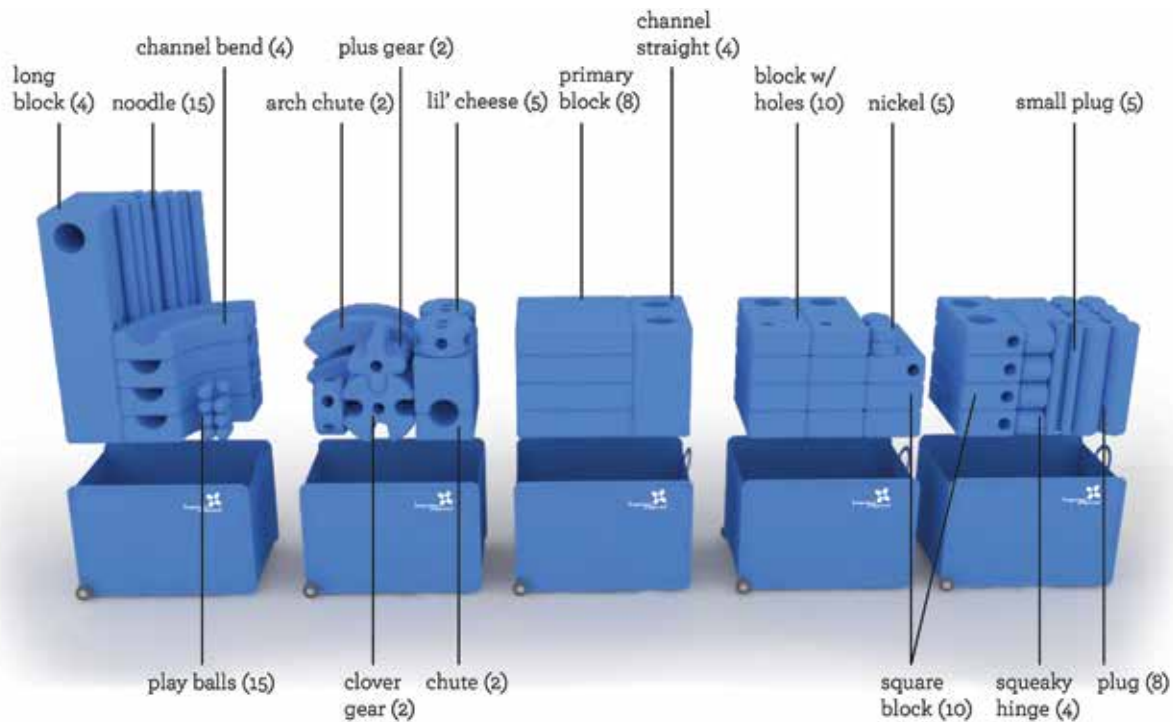
Approx.
3'1" L ×
2'1" D ×
2'1" H

(per Bag)

Total Weight:
300 lbs

(five Bags and contents)

Site surface
must support
260 lbs



limited warranty

Imagination Playground, LLC (the “Manufacturer”) provides the following Limited Warranty to the original purchaser (the “Purchaser”) of Imagination Playground in a Box or Imagination Playground in a Cart. This warranty covers the Imagination Playground Box or Cart storage unit and the Loose Parts/Imagination Playground Blocks only.

Box and Cart Storage Unit Limited Warranty

Imagination Playground, LLC (the “Manufacturer”) warrants its products to be free from structural failure due to defect in materials or workmanship during normal use and installation in accordance with the specifications as provided by the Manufacturer.

The warranty shall commence on the date of purchase and terminate at the end of ONE (1) YEAR from the date of purchase (the “Warranty Period”).

The warranty stated is valid ONLY if the products and structures are: installed properly and in conformity with the layout plan and/or installation instructions furnished by the Manufacturer using approved parts; maintained and inspected in accordance with the Manufacturer’s instructions and/or user manual; subjected to normal use for the purpose for which the goods were designed, and not subjected to abuse, vandalism, misuse, neglect or accident; not subjected to unauthorized addition or subtraction of parts; and not modified, altered or repaired by persons other than the Manufacturer or its designees in any respect which, in the sole judgment of the Manufacturer, affects the condition or operation of the structures.

This warranty does not cover: cosmetic damage or defects such as surface scratches, dents, marring, fading or discoloration; damage due to normal wear and tear; damage due to an “Act of God”, including without limitation, storms, hurricanes, hail, flooding, lightning, tornadoes, sandstorms, earthquakes and windstorms; and damage due to “Environmental Factors”, such as windblown sand, salt water, salt spray and airborne emissions from industrial sources (e.g., sulfur, acids or corrosive chemicals, other than photochemical smog).

THIS WARRANTY IS EXCLUSIVE AND IS IN LIEU OF ALL OTHER REPRESENTATIONS AND WARRANTIES OF ANY KIND, WHETHER EXPRESS, IMPLIED OR STATUTORY, INCLUDING BUT NOT LIMITED TO ANY WARRANTY OF CONDITION, DESCRIPTION, MERCHANTABILITY, FITNESS FOR A PARTICULAR PURPOSE OR NON-INFRINGEMENT OR ANY REPRESENTATIONS OR WARRANTIES MADE IN ANY BROCHURES, MANUALS, CATALOGS, LITERATURE OR OTHER MATERIALS OF THE MANUFACTURER. FURTHER, NO REPRESENTATION, WHETHER ORAL OR WRITTEN, OF A MANUFACTURER’S REPRESENTATIVE MAY BE SUBSTITUTED OR ALTER THE EXCLUSIVE LIMITED WARRANTY.

EXCLUSIVE REMEDY: To make a valid claim under the terms of this warranty, the Purchaser’s written statement of claim (including a specific description of the defect), along with a copy of the original invoice, maintenance records and supporting photographs, must be

received by the Manufacturer at the following address no later than the end of the Warranty Period:

Imagination Playground, LLC

Attn: Customer Service

5 Union Square W, 8th FL

New York, NY 10003

Should the breach of this warranty occur within the Warranty Period, the Manufacturer shall, upon proper notification in writing of the defect, correct such defect, either by repairing the defective part or parts or by making available a replacement part, at the Manufacturer's option, within sixty (60) days of receipt of such written notification. The Manufacturer shall deliver the repaired or replacement part or parts to the site free of charge, but will not be responsible for providing labor or the cost of labor for removal installation, assembly or otherwise. Any replacement part shall be subject to this warranty for the balance of the original applicable Warranty Period but not thereafter.

LIABILITY EXCLUSION: TO THE EXTENT PERMITTED BY LAW, THE MANUFACTURER SHALL IN NO EVENT BE LIABLE IN CONNECTION WITH THIS PRODUCT FOR (A) ANY INDIRECT, SPECIAL, INCIDENTAL, LIQUIDATED OR CONSEQUENTIAL DAMAGES, BASED ON TORT, CONTRACT OR OTHER LEGAL THEORY, WHETHER OR NOT ADVISED OF THE POSSIBILITY OF SUCH DAMAGES, OR (B) ANY DAMAGES WHATSOEVER IN EXCESS OF AN AMOUNT EQUAL TO THE PURCHASE PRICE FOR SUCH PRODUCT. THE RIGHT TO RECOVER DAMAGES WITHIN THE LIMITATIONS SPECIFIED IS THE PURCHASER'S EXCLUSIVE ALTERNATIVE REMEDY IN THE EVENT THAT THE REMEDY PROVIDED HEREIN FAILS OF ITS ESSENTIAL PURPOSE.

FORCE MAJEURE: The Manufacturer shall not be liable in any way because of unforeseen circumstances or causes beyond its control, including, without limitation, strike; lockout; embargo; riot; war; government sanction; act of terrorism; fire; Act of God; accident; failure or breakdown of components necessary to order completion; subcontractor, supplier or Purchaser caused delays; inability to obtain labor, materials or manufacturing facilities; or compliance with any law, regulation or order.

SAVINGS CLAUSE: If any part of the terms and conditions stated herein is held void or unenforceable the same will be treated as severable, leaving valid the remainder of the terms and conditions which shall be deemed revised so as to remain enforceable to the greatest extent possible consistent with such holding.

GOVERNING LAW: All matters relating to the sale of products or services shall be governed by the law of the State of New York, U.S.A, notwithstanding any conflict of laws principals.

DISPUTES: Purchaser irrevocably consents to the exclusive jurisdiction and venue of the courts in the City and County of New York, New York, U.S.A. in all matters arising out of or relating to the sale of products and/or services hereunder.

No action, regardless of form, arising out of, or in any way connected with, the products or services furnished by the Manufacturer may be brought by the Purchaser more than ONE (1) YEAR after the date of purchase.

Loose Parts/Blocks Limited Warranty

Imagination Playground, LLC (the “Manufacturer”) warrants its products to be free from defects in materials or workmanship during normal use and in accordance with the Manufacturer’s user instructions.

The warranty shall commence on the date of purchase and terminate at the end of ONE (1) YEAR from the date of purchase (the “Warranty Period”).

The warranty stated is valid ONLY if the products are used in conformity with the Manufacturer’s User Manual; maintained and inspected in accordance with the Manufacturer’s User Manual; for normal use for the purpose for which the goods were designed; not subject to abuse, vandalism, misuse, neglect, or accident; not used near sharp objects or abrasive surfaces; not stored in areas that are above 120 degrees Fahrenheit or below 0 degrees Fahrenheit; and are not modified or altered.

This warranty does not cover: any small variation in block color, which is normal and will not affect the function of the blocks; minor color fading caused by extended exposure to sunlight over time, which is normal and will not reduce functionality; small surface voids that may be present, which is a normal part of the manufacturing process; damage due to an “Act of God”, including without limitation, storms, hurricanes, hail, flooding, lightning, tornadoes, sandstorms, earthquakes and windstorms; and damage due to “Environmental Factors”, such as windblown sand, salt water, salt spray and airborne emissions from industrial sources (e.g., sulfur, acids or corrosive chemicals, other than photochemical smog).

THIS WARRANTY IS EXCLUSIVE AND IS IN LIEU OF ALL OTHER REPRESENTATIONS AND WARRANTIES OF ANY KIND, WHETHER EXPRESS, IMPLIED OR STATUTORY, INCLUDING BUT NOT LIMITED TO ANY WARRANTY OF CONDITION, DESCRIPTION, MERCHANTABILITY, FITNESS FOR A PARTICULAR PURPOSE OR NON-INFRINGEMENT

OR ANY REPRESENTATIONS OR WARRANTIES MADE IN ANY BROCHURES, MANUALS, CATALOGS, LITERATURE OR OTHER MATERIALS OF THE MANUFACTURER. FURTHER, NO REPRESENTATION, WHETHER ORAL OR WRITTEN, OF A MANUFACTURER’S REPRESENTATIVE MAY BE SUBSTITUTED OR ALTER THE EXCLUSIVE LIMITED WARRANTY.

EXCLUSIVE REMEDY: To make a valid claim under the terms of this warranty, the Purchaser’s written statement of claim (including a specific description of the defect), along with a copy of the original invoice, maintenance records and supporting photographs, must be received by the Manufacturer at the following address on or before the end of the Warranty Period:

Imagination Playground, LLC
Attn: Customer Service
5 Union Square W, 8th FL
New York, NY 10003

Should the breach of this warranty occur within the Warranty Period, the Manufacturer shall, upon proper notification in writing of the defect, correct such defect, either by repairing the defective block or by making available a replacement block, at the Manufacturer's option, within sixty (60) days of receipt of such written notification. The Manufacturer shall deliver the repaired or replacement part or parts to the Purchaser free of charge. Any replacement block shall be subject to this warranty for the balance of the original applicable Warranty Period but not thereafter.

LIABILITY EXCLUSION: TO THE EXTENT PERMITTED BY LAW, THE MANUFACTURER SHALL IN NO EVENT BE LIABLE IN CONNECTION WITH THIS PRODUCT FOR (A) ANY INDIRECT, SPECIAL, INCIDENTAL, LIQUIDATED OR CONSEQUENTIAL DAMAGES, BASED ON TORT, CONTRACT OR OTHER LEGAL THEORY, WHETHER OR NOT ADVISED OF THE POSSIBILITY OF SUCH DAMAGES, OR (B) ANY DAMAGES WHATSOEVER IN EXCESS OF AN AMOUNT EQUAL TO THE PURCHASE PRICE FOR SUCH PRODUCT. THE RIGHT TO RECOVER DAMAGES WITHIN THE LIMITATIONS SPECIFIED IS PURCHASER'S EXCLUSIVE ALTERNATIVE REMEDY IN THE EVENT THAT THE REMEDY PROVIDED HEREIN FAILS OF ITS ESSENTIAL PURPOSE.

FORCE MAJEURE: The Manufacturer shall not be liable in any way because of unforeseen circumstances or causes beyond its control, including, without limitation, strike; lockout; embargo; riot; war; government sanction; act of terrorism; fire; Act of God; accident; failure or breakdown of components necessary to order completion; subcontractor, supplier or Purchaser caused delays; inability to obtain labor, materials or manufacturing facilities; or compliance with any law, regulation or order.

SAVINGS CLAUSE: If any part of the terms and conditions stated herein is held void or unenforceable the same will be treated as severable, leaving valid the remainder of the terms and conditions which shall be deemed revised so as to remain enforceable to the greatest extent possible consistent with such holding.

GOVERNING LAW: All matters relating to the sale of products or services shall be governed by the law of the State of New York, U.S.A, notwithstanding any conflict of laws principals.

DISPUTES: Purchaser irrevocably consents to the exclusive jurisdiction and venue of the courts in the City and County of New York, New York, U.S.A. in all matters arising out of or relating to the sale of products and/or services hereunder.

No action, regardless of form, arising out of, or in any way connected with, the products or services furnished by the Manufacturer may be brought by the Purchaser more than ONE (1) YEAR after the date of purchase.



**transforming children's
lives through play!**

Copyright © 2018 Imagination Playground, LLC.
All Rights Reserved
www.imaginationplayground.com

imagination
playground™

